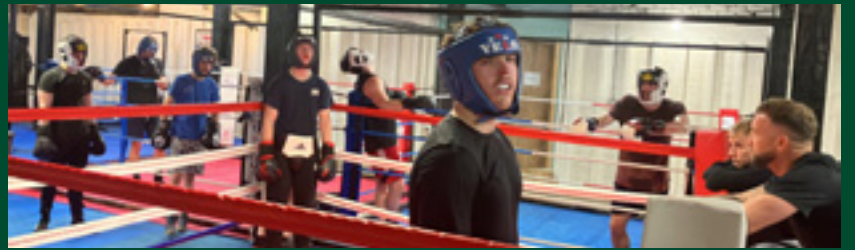


DIRECTING FUNDS



DRIVING CHANGE.

2023/2024 ANNUAL REVIEW



CONTENTS



01

Message from our
Chair and CEO



03

Our impact 2023/24
How we spent our funds



22

Our Charitable Funds

02

Funds raised to support
stronger Somerset
communities

04&05

Ways to give

12

Supporting older people
in our communities

24

Our vision, mission
and values

06

Supporting strong,
connected communities

14

Surviving Winter

08

Helping young people
build a brighter future

16-21

Grants made in 2023/24



MESSAGE FROM OUR CHAIR AND CEO

➤ Throughout this review, you'll find several stories highlighting how carefully directed funding, channelled through Somerset's brilliant local charities and social enterprises, can transform lives and build stronger communities. These are just a small sample of over 400 local organisations we've supported this year.

You will also notice that this year, we've included a number of United Nations' Sustainable Development Goals (SDGs) that relate to our 4 themed sections of this publication. Monitoring the difference that our funding makes is a vital part of our work, but we now link their work with one or more SDGs, helping us all to 'think global, act local'.

We are all too aware of the pressures within our society. And here, in our beautiful rural county of Somerset, we are not immune to these challenges, many of which remain hidden and often overlooked. That's why local, community-led action – designed and driven by those who understand their villages, neighbourhoods, and towns better than anyone – is essential to the health, social cohesion, and overall wellbeing of Somerset.

Throughout the year, we witness countless examples of how these organisations go the extra mile to help individuals who are at risk of being left behind or marginalised, enabling them to lead more active, fulfilling lives as valued members of their communities, to the benefit of all.

We're deeply grateful to our supporters and partners for their unwavering commitment to Somerset. By working together, we create something far greater than the sum of our parts. We know that giving back to Somerset means something special, and it is our privilege to help make a significant difference in the places that matter most to you.

We also want to extend our sincere thanks to our trustees, staff, and volunteers for their tireless dedication to our mission. We are fortunate to have a remarkable team with a strong sense of purpose. With your continued support, we will continue to grow our impact both now and far into the future.



Michael Samuel
Michael Samuel MBE
Chair

Justin

Justin Sargent OBE DL
Chief Executive



FUNDS RAISED TO SUPPORT STRONGER SOMERSET COMMUNITIES

£4,814,885

Total funds raised in 2023–24

£917,677

New funds added to our
endowment

£50,000

Typical annual income of
a funded group

7

New Funds created
for our communities



“Thanks for sharing
your impact report.
We’re honoured to
support something
that does so much
good within the
local community!”
Fundholder

➤ In our 2021–25 strategy, we set ourselves an ambitious goal of adding £3 million to our endowment fund, building sustainable, long-term funding for our communities.

By the end of March 2024 we had secured £917,677 of new funds added to our endowment, helping us to achieve this target. We ended the financial year with an endowment valued at around £9.1 million.

It remains vital for us to raise funds that enable us to provide long-term and flexible funding for the groups we support so they can better serve their communities. That’s why we’ve created our **Collective Giving Funds**: a unique and powerful way for donors to come together to drive social change in Somerset.

Our aim is to provide simple, rewarding and impactful ways for everyone in Somerset to give locally – regardless of how much they want to give. You can read more about this on page 5.



OUR IMPACT



Scan the QR code to view an interactive map of our funding during the year

While we recognise that people in any community can face hardship and disadvantage, we particularly aim to respond to communities that face the highest levels of deprivation or are among the most isolated in our county.

- 8% of Somerset’s population – or 47,000 people – live in communities ranked within the 20% most deprived in England.
- This year 30% of our funding supported those communities.

➤ FUNDED GROUPS

A typical group that we fund is one that is 12 years old and today operates on around £50,000 a year. It is run by 4 paid staff, most of whom are part time, and 12 volunteers. It would most likely have received £3,000 from us this year.

One of our priorities is to support groups like this, who are based in our most deprived neighbourhoods.

➤ FUNDED INDIVIDUALS

Our grants to individuals expanded significantly again this year, thanks to our partnership with the Bishop Fox’s Educational Foundation. From our different funding programmes for individuals, we awarded nearly 400 grants totalling £221,494. A typical grant to an individual is £780, and awards are to help them overcome financial disadvantage, to access opportunities, nurture talent and realise their full potential.

➤ OPEN GRANTS DATA



We publish our grants via 360Giving, an initiative that aims to help UK funders publish their data in an open and standard format online. We believe that with better information, grant-makers can be more effective and strategic decision-makers. For more information, visit: www.threesixtygiving.org

HOW WE SPENT OUR FUNDS

£4,266,022

Overall funding awarded*

421

Number of grants awarded to groups

391

Number of grants awarded to individuals

£3,000

Typical grant size to groups

£780

Typical grant size to individuals

£50,000

Typical annual income of a funded group

“The process of working with SCF has been great. The application process was clear and communication between your team and myself has been brilliant. Your team are compassionate and helpful and have shown real understanding – thank you.” Science Boost CIC

“Thank you so much for your help over the last few weeks, it’s been gratefully appreciated.” SWEF applicant

* This figure includes returned grants and social investments

WAYS TO GIVE

We provide rewarding and impactful ways for donors to support the causes and places they care about most.

We aim to build stronger communities in Somerset where everyone has the opportunity to thrive. Together, we fund hundreds of amazing local organisations – and the passionate people within them – that change lives every day.

Since we were founded in 2002, we've awarded over £31 million in funding, changing thousands of lives across Somerset. With over 20 years of experience, we're well placed to help individuals, families and businesses find and support projects in the places they're passionate about and to focus their giving on the causes that align with their values. Our team of charity experts guide donors to the best solution for them from a variety of rewarding ways to give.

We offer a range of simple alternatives to a charitable trust.

CHARITABLE FUNDS: A SIMPLE AND IMPACTFUL ALTERNATIVE TO A CHARITABLE TRUST

Building your own Charitable Fund gives you access to our expert philanthropic advice to create a strategy for your giving. Together, we'll build a bespoke Fund that aligns with your values and the causes and places you care about.

You could choose a **Forever Fund**, where your donations are invested and the income is used to provide sustainable funding for our communities today and for generations to come.

Or you could choose an **Immediate Impact Fund**, where we'll invest your funds into our communities straight away. You can either top up your Fund when it runs out, or make regular donations that align with your giving strategy.

Whichever type of Charitable Fund you choose, we provide expert

philanthropic advice to make local giving easy, rewarding and impactful. Through our unrivalled breadth and depth of local knowledge, we'll direct your generous gifts so they'll drive change in our communities. We'll take care of all the administration, carry out careful due diligence, and share inspiring stories and opportunities so you can see the difference you've made.

➤ OUR WORK WITH CHARITABLE TRUSTS

Charity Trustees with an interest in supporting Somerset often choose to give through us because of our unrivalled knowledge of local charities and in-depth understanding of local need. By transferring a Charitable Trust, Trustees can ensure their charity can continue to carry out its objectives for many years to come.



“My fellow Trustees and I decided to transfer stewardship of The Gooch Charitable Trust (Ilminster) to Somerset Community Foundation, to make the administration of the Trust as efficient as possible and ensure the funds go further in their intended purpose of positively impacting the Ilminster community for generations to come.”

Heather Virgin,
Co-founder of The Gooch Trust

COLLECTIVE GIVING FUNDS: GIVE WITH OTHERS TO DRIVE CHANGE TOGETHER

Our Collective Giving Funds are a unique and powerful way for donors to come together to drive social change in Somerset.

By donating to a Collective Giving Fund, you can join with others to make a bigger impact to a cause you care about. These Funds are guided by research and listening to our communities and charities so we can provide funding that helps them tackle the most pressing challenges in Somerset and build stronger communities where everyone has the opportunity to thrive.

Our **Collective Giving Funds** are:

➤ THE SOMERSET YOUTH FUND:

helping to enrich the lives of children and young people, and helping ensure all young people have the support and opportunities to overcome challenges and build a brighter future.

➤ THE SOMERSET OLDER PEOPLE'S FUND:

supporting work that reduces loneliness and isolation and improves physical health to help older people age well.

➤ THE SOMERSET WELLBEING FUND:

supporting vital work that improves the mental and physical health of people in Somerset and helps to create happier, healthier communities.

➤ THE SOMERSET ENVIRONMENT FUND:

supporting local initiatives working to protect and preserve our environment, inspiring community action on climate change, and helping create more sustainable communities.

➤ THE SOMERSET ARTS FUND:

providing funding for local, grassroots organisations to nurture creativity and culture, and widening access to the arts.

You can also opt to give collectively in a way that will support communities for generations to come through our **Somerset Forever Fund**. Donations to The Somerset Forever Fund are professionally invested to provide us with flexible, sustainable income every year, providing vital grants to a diverse range of good causes across Somerset, wherever the need is greatest.

Tristan with Brigit Strawbridge, author of *Dancing with Bees*, at the official opening of the shelter at Worthington Woods Food Forest.



“We’ve always been very, very grateful for the support that we get from Somerset Community Foundation – it’s invaluable. We were able to use the funds to build a shelter on our Worthington Woods site. Local Cubs and Beavers, as well as volunteers, use the space to learn more about the natural world. Worthington Woods is in a rural area, next to a social housing estate. It’s used by the community to grow free food, but also to teach children and other groups about the merits of biodiversity and producing food in harmony with nature.”

Tristan Faith, Founder of The Food Forest Project

GIFTS IN WILLS: COULD YOU SUPPORT SOMERSET FOR GENERATIONS TO COME?

Leaving a gift in your Will is an incredible way to change lives in Somerset for generations to come. You can name Somerset Community Foundation as a beneficiary in your Will to allow us to use funds flexibly, support one of our Collective Giving Funds, or set up a bespoke Charitable Fund to support the causes or places you care about.

You can leave a gift of cash, shares, or property in your Will, and donating 10% or more of your net estate to charity can reduce the Inheritance Tax on the remainder of your estate from 40% to 36%.



“I am passionate about building stronger and more sustainable communities in Somerset, having lived in the county for most of my life. I wanted to leave a legacy to help with this mission and could think of no better place to leave my gift than to Somerset Community Foundation to direct it to small charities within Somerset. I wanted to rely on SCF’s knowledge and expertise to direct my gift so it makes the most impact possible over the years.”

SCF Legacy pledger



Centre for Outdoor Activity & Community Hub (COACH) received £11,000 to install a platform lift, improving accessibility in their building.

SUPPORTING STRONG, CONNECTED COMMUNITIES



Star Scheme support young people and families through engagement with grassroots rugby.

£921,689
Overall funding awarded*

85
grants awarded*

SUSTAINABLE DEVELOPMENT GOALS

3 GOOD HEALTH AND WELL-BEING



10 REDUCED INEQUALITIES



➤ Helping to build strong, connected and inclusive communities is at the heart of our work at Somerset Community Foundation. One type of group that helps us achieve this aim are community sports clubs, which are often run by local volunteers and make use of local facilities like halls and recreation grounds. These clubs offer more than just a place to play sports. They create spaces where community members can connect, support each other, and work together toward common goals. By funding them to bring people together and encourage active lifestyles, we're helping to strengthen communities, improve health and reduce social isolation. We've funded many sports clubs this year, including Wells Boxing Club which is featured on the next page. Others who have received a grant this year include Spaxton Cricket Club,

which received £5,000 to install new safety netting, and Bridgwater & Albion RFC, which received £80,000 to renovate their facilities to better accommodate increased numbers of female players. Both of these grants were made from our HPC Community Fund. Elsewhere in the county, the Centre for Outdoor Activity & Community Hub (COACH) at Taunton's French Weir Park received £11,000 to install a platform lift to improve accessibility in their building. We were also able to provide £5,000 to the Star Scheme to support young people and families to overcome the impact of experiencing Adverse Childhood Experiences (ACEs) through engagement with grassroots rugby. These are just a few of the groups we have funded this year to support strong, connected communities.

* Grants over £2,000

Case Study:

Wells Boxing Club



Graham Kelly with an attendee at Wells Boxing Club.

Graham Kelly, joint head coach at Wells Boxing Club, told us how a £5,000 grant from the Commissioner's Crime Prevention Fund has been a breath of fresh air for the club's premises and kit.

"Our doors are open to all here at Wells Boxing Club. We're open 3 nights a week, and have men, women and children of all ages and abilities coming along – from age 10 through to almost 80 years old, currently. There's no age limit.

The club is regulated and governed by England Boxing who provide a strict code of conduct and practice that we adhere to. The core principles of this are openness, friendliness, respect, and helping everyone who attends to have a positive experience and to benefit from their involvement with the club.

There's no requirement for pre-booking or pre-paying – people who come on the night drop £2 into a sub tin on arrival, if they're able. This ensures the club is open to people who may have chaotic home lives and may not be in a position to book or pay in advance.

People who attend our club include those who come for fitness, those

who want to feel more confident in self-defence, young people with poor self-esteem, and young people and adults with mental health problems. Our local GPs informally refer people to the club as they recognise how much attending regularly helps people with this. We're aware of who they are – we have medical forms, but we make sure they don't feel 'singled out' or that they're being treated any differently – but equally, we make sure we act according to their needs.

We see the transition in people over time: they become more confident and gradually mix more with the rest of the group. Quite often, people who have come since they were young, leave in their 20s and then come back again in their 30s. We let everyone through our doors – everyone's welcome here.



One lad has been coming 3 times a week since he was 9 years old. His home life was unstable and we were his only constant in life. Through some sponsorship and fundraising, we took him on a trip to a boxing club in South Africa that we've connected with. Everything was paid for. He'd never been on a boat or a plane in his life – he'd never left the country. The experience was absolutely life-changing for him and he's a different person now.

Before our grant from you, we were struggling. Our premises was damp and, to be honest, a bit dingy when I first took over. There are no windows, which means no ventilation, and as you can imagine, there was a lot of moisture in the air from all the exercise. By the end of the night the floors were slippery and we had mould on the walls. The ventilation and extraction fans we've been able to buy and install, thanks to the funding, have been life savers, really."

HELPING YOUNG PEOPLE BUILD A BRIGHTER FUTURE



Somerset Council support disadvantaged young people across the county to start and achieve their Duke of Edinburgh (DofE) Award. We awarded DofE Somerset £4,000 from our Main Grants programme for tents and rucksack rain covers.



➤ We know that taking part in youth activities can result in positive short-term outcomes. These include better physical health and wellbeing, prosocial behaviours (behaviour intended to help others) and improved education. There is also strong evidence that these outcomes last for many decades.

Despite the clear evidence that youth services have a positive effect on young people, particularly those who are vulnerable, government funding for youth work across England has fallen by over 60% in the last decade. Thousands of youth worker jobs have been cut and 750 youth centres have closed.

We continued to fund youth clubs and youth workers during the year, as we have done for many years before.

Their work is also being supported by the Somerset Youth Work Alliance, which is facilitated by Spark Somerset, and now hosts 17 youth organisations across Somerset.

This year, we awarded grants to youth clubs in the Charltons, Evercreech, Langport, Stogursey, Winsford, Wiveliscombe and elsewhere across the county, to improve health and wellbeing, increase skills and improve confidence.

In some cases, these grants are designed to help youth workers address specific issues in their communities, for example preventing young people getting involved in antisocial activities, and protecting those at risk. Youth workers are often well placed to address such issues quickly and without further involvement by local policing teams. Some of these grants were made from a Fund we manage on behalf of the Police & Crime Commissioner.

Examples like these, and MineheadEYE on the next page, highlight the transformative power of youth work and the significant role youth clubs play in shaping brighter futures for young people in Somerset.

£1,515,471
Overall funding awarded*

68
grants awarded*

SUSTAINABLE DEVELOPMENT GOALS

4 QUALITY EDUCATION



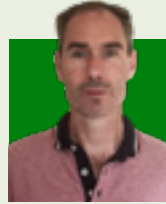
10 REDUCED INEQUALITIES



* Grants over £2,000

Case Study:

MineheadEYE



MineheadEYE's aim is to ensure that young people and communities disadvantaged by rural isolation have access to the same opportunities for development, personal growth and support that exist elsewhere. Paul Matcham, Chief Executive, tells us more about the youth and community hub in west Somerset.

"West Somerset is the most deprived area in the south west. In 2017 we came 326th out of 326 districts in England for social mobility. And things haven't changed that much since then. We support young people across the whole of west Somerset. We provide a diversity of fun activities, either free or at very little cost, for some of the most vulnerable young people in the area. This has included scooting, climbing, DJing, bouldering, street art, 3D printing and podcasting. And we have a wellbeing team which includes counsellors who can support any young people going through tough times. We provide fun and support to groups such as our home education, schools, SEND and young carers groups. We have a minibus which we either load up with kit for activities which we take out to the village clubs, or we load it up with young people from the villages and bring them to MineheadEYE.

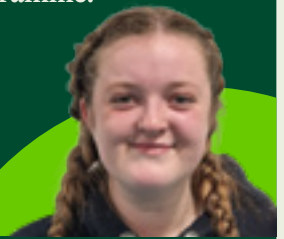
Young people in our part of the county get little chance to take part in activities; their options are limited. In addition to our youth and community hub in Minehead, we have youth clubs in 7 villages, all of which are run by a professional, qualified youth worker. Without the clubs, the only other interaction a lot of the young people have with others, is while they're at school.

There are few jobs and limited opportunities in our area. There's one secondary school and the nearest Further Education college is a 1 hour drive away. The bus service is intermittent. We connect young people to services. We have professional contacts in Bridgwater, and we'll visit other clubs.

The funding we've received from Somerset Community Foundation has allowed us to work with other organisations and increase our resources and capacity. And it's allowed us to diversify our offer. We've seen marginalised groups of people flourish, by connecting and meeting other people in the community.

Without the support of SCF we literally wouldn't be able to make such an offer to so many young people around west Somerset. The funding has been vital for a whole range of projects we've delivered. In fact, your funding is crucial – the young people tell us."

➤ We spoke with Issy, who attended Minehead Youth Club for 2 years before becoming a volunteer for the EYE. She helps out at the boys' night, girls' night, the youth club, and the summer activity programme.



"As a young person living in Minehead, MineheadEYE has always been a place where I could express myself, my interests, and get support and advice – while also having fun with my friends. The staff at the EYE put on such brilliant activities, and young people of all ages enjoy getting involved.

The staff have always shown interest in my hobbies and personal life, and are so caring. It's a great place for me and my friends to hang out together, and we love going there."



OpenStoryTellers give a talk at Frome Police Station about their film on disability hate crime.



Fit for Work participants celebrating the completion of their course at Bridgwater YMCA.

IMPROVING



Love Community CIC helps some of the most vulnerable groups in society to come together, supporting and delivering community projects.

HEALTH & WELLBEING

➤ We all want good physical and mental health, but unfair and preventable inequalities exist across Somerset. These health inequalities can be particularly profound for adults with learning disabilities.

Put simply, adults with learning disabilities have poorer physical and mental health than most other people, and face barriers to accessing healthcare and support. We've been directing funds to several projects designed to reduce some of these inequalities.

And this year that included a £28,000 grant to the Somerset Activity & Sports Partnership (SASP) to deliver their Fit for Work programmes. These are designed to help people build up the strength and stamina needed to take up employment and improve their confidence.

Smaller grants were also awarded to Taunton & District Mencap Society, The Hub Yeovil, The Pod Youth Club in Frome, Love Community CIC, and Loveable CIC. From opportunities to socialise with others to access to

arts and crafts activities, all of these groups benefit adults with learning disabilities in Somerset.

Another vital piece of work is being delivered by OpenStoryTellers.

We awarded them a £3,145 grant to address hate and mate crime against adults with learning disabilities.

Mate crime – the act of befriending an adult with learning disabilities, before exploiting them – is poorly understood. Based in Frome, OpenStoryTellers uses storytelling and creative expression to raise awareness and empower individuals, helping them build resilience and self-advocacy skills.

These projects are important in tackling the health inequalities experienced by adults with learning disabilities. By providing targeted support and creating inclusive environments, our funding is making a tangible difference in people's lives, helping them achieve better health and wellbeing, and increasing the opportunities available to them to thrive in other areas of their lives.

£1,075,773
Overall funding awarded*

86
grants awarded*

SUSTAINABLE DEVELOPMENT GOALS

3 GOOD HEALTH AND WELL-BEING

10 REDUCED INEQUALITIES

* Grants over £2,000

Case Study:

SARSAS



Sadie Webber, Support Services Manager at Somerset and Avon Rape and Sexual Abuse Support (SARSAS), explains how our funding has helped them continue their vital work, supporting women who have experienced sexual violence and have learning difficulties and/or autism.



“We support autistic women, and women with learning disabilities, who have experienced sexual violence at any time in their lives. Sadly, research tells us that people with disabilities are up to 4 times more likely to experience sexual violence than those without.

We provide specialist one-to-one support. We have a specially trained support worker who has specific skills and understanding of the impact of sexual violence. We work with the person to understand what support would have the most positive impact on their lives. This could include things like emotional

support techniques to cope with anxiety, or they might be experiencing flashbacks, nightmares, difficulty sleeping or looking after themselves. We can also provide practical support with things like support to access housing, managing finances, making GP appointments or advocating for themselves. We also provide a free, anonymous helpline and live chat service that is open Monday–Friday.

We run groups throughout the year – including facilitated workshops about healthy relationships and consent for anyone with autism or a learning disability to attend. We really want people to be more aware of when a relationship isn’t right and what consent is.

The impact of sexual violence can be devastating and long-lasting. We understand that autistic people and people with learning disabilities may face additional challenges in seeking support such as feeling ashamed or believing they have done something wrong, difficulty communicating what has happened and not knowing who to tell or what support is available.

We support people to gradually rebuild their lives. We make our service accessible by taking the time to work with the person. We work to understand their communication needs at the pace they want to take things.

Somerset Community Foundation have been wonderfully supportive. You’ve really helped us to connect with other organisations and agencies working across Somerset to raise awareness of our work and ultimately ensure that we can provide support to those who need it.

We are the only service that is currently providing this type of support across Somerset, and without our support I honestly don’t know where people would go to access this help.

The funding we’ve received from SCF means we can continue our work and run our service here in Somerset, providing these much-needed services and ensuring people get the support they need and deserve.”

Good Fellowship Club's AGM at St Marks Church Hall in Yeovil. The club were recently awarded a grant for community bus transport costs for older people with poor mobility to access the club.



SUPPORTING OLDER PEOPLE IN OUR COMMUNITIES



The Lawrence Centre in Wells is a community-centred charity providing day opportunities for older people where members can relax, socialise and enjoy activities.

£284,405
Overall funding awarded*

30
grants awarded*

SUSTAINABLE DEVELOPMENT GOALS

1 NO POVERTY



10 REDUCED INEQUALITIES



➤ Not everyone is able to age well in Somerset. Supporting communities to improve older peoples' lives as they age is an important part of our work. That means directing funds to groups that address health needs, ensure that older people are connected, and combat poverty.

As Somerset's population continues to age, we need to continue to respond to the needs of older people. To help shape our approach, we commissioned the Community Council for Somerset to undertake some research this year which showed that activities, transport and access to specialist support continue to be key areas of need.

Community hubs, located in the heart of our towns and villages, often meet these needs. They allow communities to come together, socialise and access services – especially important for older people.

A good example of this is the Balsam

Centre, in Wincanton, which received nearly £40,000 in grant funding from us this year. Lots of things happen at the Balsam Centre every week, including a choir, a community café, repair café, a deaf and hard of hearing social group, flexercise, and health walks. These all help older people in the area to stay healthy and connected to their town.

A similar story can be found in Crewkerne, where the Henhayes Centre received £4,000 to help run their day centre for older people. This provides a space for social interaction, activities, and support services. These activities are essential in combating loneliness and isolation, which is a real concern for many older people.

And on the next page, you'll read more about Chard Community Hub and how our funding has helped this dynamic and forward-thinking CIC support those in real need in their community.

* Grants over £2,000

Case Study:

Chard Community Hub



Chard Community Hub arts and crafts group which runs weekly and is open to all.

We spoke with **Roz Hall**, Chair of Chard Community Hub, **Megan Parfoot**, Chard Community Hub Manager, and **Ingrid Edginton**, Somerset Connect Community Champion who told us about their incredible achievements, since they opened their doors just over 2 years ago, and their vision for a safer and more supportive future.



“Chard Community Hub is a dedicated space for the community of Chard to meet up, drop-in or join in. We’re self-funded, all-inclusive, with a heart to help and serve those who need us. We strive to benefit and reduce inequalities faced by vulnerable people and families in our town.

We’re here for all our community but specifically those on low income, people experiencing isolation, and early years support. We hold regular family events with the aim to always be free of charge.

We support the sustainability of the town here at Chard. We put on repair workshops, where people can come along and get their broken things fixed, and we have our Community Fridge, preventing food from going to waste. Last year we gave out over 4,000 food parcels from the fridge. We also have ‘pre-loved’ school uniform sales, and clothes swaps.

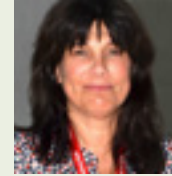
In Chard we see lots of poverty. There are high levels of deprivation, poor transport links, and inadequate provision of services in the local area.



◀ Roz Hall,
Chair of Chard
Community Hub



◀ Megan Parfoot,
Chard Community
Hub Manager



◀ Ingrid Edginton,
Somerset Connect
Community Champion

There are 2 wards in the top 5% of the most deprived area in England, and we have above average levels of low academic attainment.

Chard also has the highest level of drug and knife crime of any small town in Somerset.

We focus on the prevention and relief of poverty. The hub has established groups such as arts and crafts and sewing groups, as well as the Chard Community Fridge and the Food Pantry. We work and share our space with various different agencies, including PCSO’s, the local housing association group, health care professionals and other local support groups.

Chard Community Hub’s work is informed by a group of community leaders who meet regularly. We have strong links with other community groups in the area, and representatives in our town have ownership of these projects. Our hope is to improve people’s social mobility and to ensure Chard feels like a safe and supportive place to live – with opportunities.

Without our services many people in Chard would be left vulnerable.

The funding we’ve received from Somerset Community Foundation has enabled us to open and operate for extended hours, and we’ve also been able to provide training for our volunteers. And because of this it’s had a significant impact on those in need, who live in our community.

Without your support Chard Community Hub would not have been able to help so many people in such a variety of ways.”

SURVIVING WINTER APPEAL

NO ONE SHOULD HAVE TO CHOOSE BETWEEN HEATING AND EATING

We first launched our annual Surviving Winter appeal in 2010 to support vulnerable older people living in our communities to stay warm, safe and well through the harsh winter months. In 2023/24 our appeal supported 729 of our neighbours living in fuel poverty.

And thanks to the incredible generosity of our donors, our 2023/24 appeal was the most successful yet, raising £195,000 which was distributed as grants through our Surviving Winter partners:

AGE UK Somerset
Centre for Sustainable Energy
Citizens Advice
Community Council for Somerset
Health Connections Mendip
Live West
MHA Communities
SSAFA Somerset
West Somerset Green Forum

OUR SURVIVING WINTER APPEAL PROVIDES:

- Vital grants of up to £500 to cover heating costs
- Community meals, befriending support or other activities to reduce loneliness and isolation
- Access to practical support to increase energy efficiency and help reduce bills

We're incredibly grateful to all our amazing supporters who help us get the financial support out to those who urgently need it – people like Audrey.

£280

Average grant size

> AUDREY'S STORY

Audrey is in her 70s and lives alone. She's often worried about money and that a sudden unexpected expense could force her into debt. She told us how the Surviving Winter grant was a lifeline last year.

"To be honest I don't know quite how I manage. I'm incredibly careful with what I spend money on. I live on my own and I have to be very frugal. I have an old car because I like to be independent and allow myself a limited amount of petrol money a month. I save on my hot water where I can and I'm always careful with my heating – so even when it gets colder, I still don't put it on. I'm 72 and I really feel the cold in my little place.

It was just so fantastic to get the Surviving Winter grant. I really needed that money – and it came at just the right time."



**Surviving
Winter**



FOUNDATION GRANTS MADE TO ORGANISATIONS DURING 2023/24

SUPPORTING STRONG, CONNECTED COMMUNITIES

Grants over £2,000	Project description	Amount
Actiontrack (2 grants)	Creative sessions programme for people in the Bridgwater and Taunton areas	£100,800
Ash Millennium Wood Management Group	Installing a rainwater capture system, purchasing new power tools and planting new trees to encourage community involvement in climate change	£2,000
Berrow Community Association	Berrow Hall improvement and environmental programme	£31,513
BOSfest	Contribution to the costs of a community event in Burnham-on-Sea	£5,000
Bridgwater and Albion Rugby Football Club	Renovating a community sports facility	£80,000
Bridgwater Cricket Club	Installation of accessible toilets at a community cricket club	£5,000
Brompton Regis Village Shop	Contribution towards increased overheads of community-run shop	£3,000
Burnham-on-Sea Motor Boat and Sailing Club	Upgrading and rebuilding washing facilities and creating new accessible toilets	£45,000
Burnham's Excellent Entertaining Society (BEES)	Contribution towards performance costs of a community theatre group	£3,000
Centre for Outdoor Activity & Community Hub (2 grants)	Platform lift to improve accessibility at an activity centre in Taunton	£11,000
Chard Community Hub (3 grants)	Developing a community hub to support local needs	£10,130
Cheddar Arts Quarter CIC	Providing opportunities for local people to connect creatively with the Mendip Hills Nature Recovery Plan	£2,000
Churchinford and District Community Store	Installing solar panels to reduce the running costs of a community shop	£5,900
Cossington Parish Council	Supporting the creation of a planting plan and supplying plants for a community wood	£2,000
Creech St Michael Village Hall	Subsidising hall hire fees in order to keep a rural community building accessible	£2,000
Diversity Voice	Contribution to salary costs of community link workers to provide information, advice and translation services	£25,910
Dunster Festival	Community music learning and participation programme for under represented groups in west Somerset	£4,000
East Huntspill Cricket Club	Improving safety netting at a community sports club	£2,000
East Huntspill Parochial Church Council	Contribution towards audio equipment for community events	£1,897
Exmoor Community Bus Association	Subsidising the cost of a community transport provider to keep it accessible	£3,312
Fiddington Village Hall	Installation of playground equipment	£4,500
Forge Rhyne Allotment Association Limited	Improvements to a community allotment in Highbridge and surrounding area	£2,200
Friends of St. Leonard's (FOSL)	Refurbish a church hall in Rodney Stoke to provide a welcoming space for the local community	£2,500
Frome Festival	Running costs for Frome Festival 2024	£2,500
GoCreate Taunton CIC (2 grants)	An art hub and support for young people who are on waiting lists for CAMHS	£10,000
Green Ilminster	Core costs for community environmental umbrella group	£2,500
Green Wedmore	Funding to help start a community farm	£5,000
Highbridge Festival of the Arts	Venue costs for a community arts festival to support the schools attending the event	£3,500
Holford Cricket Club	Facility and grounds upgrades to a community sports club	£8,820
Literally Shepton CIC	Community event to bring the community together	£2,000
Loop:Frome (Frome Compost CIC)	Developing a network of inclusive and accessible community composting and growing spaces across Frome	£9,928
Lopen PCC	Renovation of a community building including replacement of a thatched roof	£2,500
Lost Projectz (2 grants)	A climbing (bouldering) wall for the community in Glastonbury	£7,000
Love Glastonbury	Contribution towards buying food supplies in order to meet the growing demand caused by the cost-of-living crisis	£3,300
Make the Sunshine CIC	Bringing communities together through creative workshops and performances in Shepton Mallet	£2,310
Minehead and Coast Development Trust	Staff costs to help deliver the Minehead Plan for People and Place	£10,000
Minehead and Exmoor Music Festival	Community music event	£2,000
National Coastwatch Institution	Creating two new volunteer-run coastwatch stations at Burnham-on-Sea and Minehead	£25,000
North Curry Sport	Replacement tractor for volunteers to maintain the community sports ground	£2,500
North Newton Village Hall	Upgrading a heating system in a community hall	£10,000
North Taunton Partnership (3 grants)	Community activity days and mental health and wellbeing groups	£12,342
Oake and District Village Hall and Recreation Ground	Replacement chairs for the village hall	£2,000
Onion Collective	Improving accessibility at a community cultural centre in Watchet	£9,980
OpenStoryTellers	Addressing hate and mate crime against adults with learning disabilities	£3,145
OSR Projects Art & Culture CIC	Subsidised places on a ceramics course in West Coker	£2,000
Otterhampton Village Hall	Village hall refurbishment	£5,701
Our Community Fridge - Monkton Heathfield	Increasing the capacity of a community fridge to meet higher demand	£3,000
Pitminster & Angersleigh Playing Field Association	A 'forest school for adults' on Blagdon Green	£2,500

SUPPORTING STRONG, CONNECTED COMMUNITIES continued

Grants over £2,000	Project description	Amount
Plotgate Community Farm	Improving and developing infrastructure, physical accessibility, and management capacity	£5,000
Polonia&Friends	Family summer camp activities and transport costs to an activity centre	£2,438
Porlock Vale CIC (2 grants)	Core costs for visitor centre and community space	£5,000
Pride-on-Sea	Contribution to an LGBTQ+ pride event in Burnham-on-Sea	£3,500
Project Factory CIC	Installation and associated community engagement with 'Silent Echoes, Notre Dame' art installation	£12,534
Quartet Community Foundation (6 grants)	Joint grant programme delivery	£187,184
Queen Camel Community Land Trust	Repairs to a community building following flooding	£10,000
Seed Sedgemoor	Reimagining an empty high street retail unit as a creative hub for the community	£6,670
Sevenside Community Rail Partnership	Contribution to developing a community room in Bridgwater train station	£10,000
Shapwick Parish Council	Purchase of a large communal shed for use by the allotment society	£2,500
SHARE Frome	Increasing the capacity of a 'library of things' to meet higher demand	£2,500
Sheba Soul Ensemble	Performances and drop-ins for the black community	£4,000
Somerset African Caribbean Network	'Windrush all year round and beyond' programme (Windrush 75)	£5,000
Somerset Bus Partnership	Administrative and marketing costs for 2 bus awareness campaigns	£3,913
Somerton Town Youth Football Club	Training coaches and purchasing new football equipment	£2,000
South Chard Church (The HUB)	Salary costs for a community worker	£3,000
South Somerset Community Accessible Transport (2 grants)	Core costs for community accessible transport services in south Somerset	£10,000
Spark Somerset (3 grants)	Supporting youth clubs, warm spaces, and carers across Somerset	£13,552
Spaxton Cricket Club	Improving safety of a village sports club	£5,000
St John the Baptist Church, Pawlett (2 grants)	Toilet and servery upgrades for a church-based community hub	£7,000
St John the Evangelist, Highbridge	Purchasing equipment for hosting art exhibitions in a church-based community hub	£2,000
St Mary's, Bridgwater	Contribution towards increased overheads of a community church	£2,500
St Peter's Community Centre	Contribution towards buying food supplies in order to meet the growing demand caused by the cost-of-living crisis	£2,500
Stoke-sub-Hamdon Sports and Recreation Trust (2 grants)	New skatepark for local young people	£5,000
Tall Tails Theatre Company C.I.C	Shepton Mallet's Women's Festival	£3,000
Taunton Welcomes Refugees (2 grants)	Supporting refugees with conversational English in Taunton and surrounding area	£6,500
The Bluebirds Theatre Company	Core cost support for a community workshop programme and arts delivery	£4,000
The Friends of Mendip Hospital Cemetery	Restoration of a pond liner for wildlife habitat	£2,000
The Good Life Projects C.I.C	Accessibility improvements at a community farm near Shepton Mallet	£10,000
The Rubbish Art Project (3 grants)	Kitchen improvements and integrating food into current activities for disadvantaged people in Shepton Mallet	£27,000
The Thomas Poole Library	Contribution towards the salary costs of a centre manager in Nether Stowey Library	£20,000
The Waffle Hub	Improving cooking facilities at the community café in Burnham-on-Sea	£5,000
Wells Art Contemporary Ltd (2 grants)	Costs to support charities to take part in an Art Exhibition at Wells Cathedral	£6,000
Wiltshire Community Foundation	Joint grant programme delivery	£3,300
Wiveliscombe Area Partnership (2 grants)	Increasing the capacity of a community transport scheme to meet higher demand	£6,510
Woolavington Village Hall	Contribution towards energy efficiency upgrades in a village hall	£10,000

HELPING YOUNG PEOPLE BUILD A BRIGHTER FUTURE

Grants over £2,000	Project description	Amount
2BU Somerset	Contribution towards costs of a support network for young LGBTQ+ people	£75,000
41F Squadron Royal Air Force Air Cadets	Improving IT equipment to support STEM education and accessibility	£2,000
ArchiesXtra	Funding for a youth worker and an annual activity in Somerton	£3,000
Arts Taunton (2 grants)	Contributions towards the Taunton Youth Culture and Arts Festival (TYCA)	£7,500
Awe and Wonder Pre-School	Fortnightly drop-in creative sessions for under 5's in Crewkerne	£5,000
Berrow Church of England Primary School	Developing an allotment and forest school with community access	£10,000
Bishop Sutton Pre-school and Forest Club	Transforming a green, outdoor space for a rural pre-school	£2,000
Brainwave	Contribution to salary costs to support children with neurodevelopmental challenges	£85,000
Carymoor Environmental Trust (2 grants)	Activity days for disadvantaged Somerset families	£5,608
CDST Ltd	Subsidising the cost of playgroups for children with disabilities in Taunton to keep them accessible	£3,200
Charlton's Youth Club	Subsidising the cost of youth club sessions to help keep them accessible	£2,000
Children's World	'Off the Streets' programme of activities for disadvantaged young people in the Glastonbury area	£4,250
Court Fields School	Curriculum enrichment during the cost-of-living crisis	£15,000
Crimestoppers in the West Country	Training for professionals working with young people to address crime	£22,677
Cultivating Community	Developing weekly activities at Victoria Park in Frome in order to engage young people at risk of antisocial behaviour	£3,850
Edventure Frome	Providing a weekly safe space for 18-35s to explore their creativity to gain confidence and improve mental health	£4,794
Escape Support Group	Monthly drop in for children with additional needs and their families near Taunton	£5,000
Escapeline (4 grants)	Educate, prevent, and protect young people and their families who are being exploited by county line gangs	£204,650
Evercreech Youth Club	Funding for a youth worker to reopen and run the youth club	£3,120
Evolve Music	Pilot project providing pre-school learning through music in Yeovil and Wincanton	£3,500
Exmoor Community Youth Club	Core costs for a youth club in Winsford	£3,000
FASD Hub South West	Family sessions for children and young people with complex needs	£5,000
Focus Counselling	Safe space with access to counselling pilot for young people in the Frome area	£2,000
FordHaven	Family activity session for children and young people in care at a base near Glastonbury	£5,000
Guildhall Young Artists Taunton	Performing arts bursary programme	£21,434
Healthy Babies UK	Reducing social isolation for mothers in the Taunton area	£2,262
Home-Start Blackmore Vale	Continuation funding to provide practical and emotional support for disadvantaged families in south Somerset	£3,000
Home-Start West Somerset (3 grants)	Increasing the capacity of an early help service for families with young children to meet higher demand	£163,098
In Charley's Memory (3 grants)	Contribution towards a project providing counselling in schools	£123,831
In the Mix Youth Project (3 grants)	Detached youth work in Wiveliscombe for young people at risk of offending	£12,000
Key4Life	Preventative intervention for young people at risk of offending in Somerset	£5,000
Kingsmead School	Curriculum enrichment during the cost-of-living crisis and cameras for GCSE art students	£19,785
Langport and Huish Episcopi Youth Group	Increased security for youth club and outreach work with local young people to counter anti-social behaviour	£2,714
LIFEbeat	Delivering youth leadership programme opportunities for 40 young people	£5,000
Minehead EYE (3 grants)	Youth work provision west Somerset	£185,140
Nature's Bond Sling Library CIC	Running costs for a post-natal sling library and support group in Bridgwater	£3,500
Neroche Woodlanders Ltd	Support for SEND families in the Taunton area	£7,145
Phoenix (Bridgwater) Scout Group	Providing the resources to take young people and volunteers on camping trips	£5,000
Pilton Pre-school/Pilton Playgroup	Running 2 Forest School sessions a week	£4,693
PROMISEworks (3 grants)	Mentoring for vulnerable children and young people in Somerset	£199,992
Purple Elephant Family Support	Early help support for families with pre-school children in the Frome area	£5,716
Rama Life CIC	Providing a safe learning space for young people to access education and enriching experiences in Merriott	£5,000
ROC Taunton Deane	Increasing the capacity of a family mentoring service to meet higher demand	£5,000
Sedgemoor Playday	Contribution towards the costs of a free play day for children and their families	£2,000
Somerset Child Contact Centres (2 grants)	Providing supported contact to enable parents and children in Somerset to spend time together following family separation	£8,500
Somerset Youth Theatre CIC (3 grants)	Youth theatre sessions for disadvantaged young people	£18,880
South Bristol Youth	Insight into an apprenticeships programme	£12,000
St Benedict's Church	Core costs for a toddler group in Glastonbury	£3,000
St Francis of Assisi Church, Bridgwater (2 grants)	Contribution towards St Francis Holiday Club for families on lower incomes	£7,000
Stacked Wonky	Training to improve inclusion and support for young people with access needs in west Somerset	£3,900
Stand Against Violence (2 grants)	Violence prevention workshops in schools	£5,260
Star Scheme	Rugby programme for vulnerable young people in Somerset	£5,000
State of Trust	Creating new youth arts activities in Taunton to divert young people away from antisocial behaviour	£4,970
Stogursey Youth Club	Running costs for a Stogursey Youth Club	£5,000
Stowey Bears Pre-School	Enrichment day for children in a Nether Stowey pre-school	£5,000
Super Roots	Addressing young people's antisocial behaviour in Frome	£5,000
Taunton Street Pastors	Coordinating volunteer school pastors at Taunton Academy	£2,800

HELPING YOUNG PEOPLE BUILD A BRIGHTER FUTURE continued

Grants over £2,000	Project description	Amount
The Chard Area Youth Committee (2 grants)	Running costs for a youth centre	£7,868
The Somerscience Trust	Running costs for Somerscience Festival 2024 taking place in Bruton and Castle Cary	£2,500
The Space (2 grants)	Core costs for a young people's mental health service in Cheddar	£9,000
The Volunteer Network (2 grants)	Contribution towards increased overheads of several community projects in Glastonbury	£6,500
Yeovil Opportunity Group	Improving outcomes for pre-school children with SEND and their families	£5,000
YMCA Brunel Group (2 grants)	Supporting young people with the transition to independent living	£57,000
YMCA Dulverton Group (2 grants)	To support individuals in Somerset to move on to independent living with funding for essential items	£62,000
Young Somerset (2 grants)	Somerset-wide workshops for neurodivergent young people aimed at reducing the risk of them being targeted by gangs	£8,334
Youth Connect South West	Youth provision in Chilcompton to provide trusted relationships and combat isolation	£2,000
Youth Resource Services (The Rendezvous, Sherborne) Ltd	Supporting disadvantaged young people in south Somerset to gain qualifications, build self-esteem and move towards college, apprenticeships or employment	£5,000

SUPPORTING OLDER PEOPLE IN OUR COMMUNITIES

Grants over £2,000	Project description	Amount
Abbeyfield Taunton Defendamus Society Ltd	Accessible chairs for older people's lunch club	£3,609
Accessible Transport West Somerset	Supporting safer journeys for vulnerable elderly and disabled passengers	£2,500
Age UK Somerset (2 grants)	Providing direct financial support to help older people stay warm over the winter	27,800
Art Care Education	Contribution towards increased overheads of an art and education charity based in Somerton	£3,000
Bridgwater Armed Forces and Veterans Breakfast Club	Core costs to support veterans in the Bridgwater area	£3,000
Burnham and Highbridge Community Association	Upgrading the energy efficiency of a community building	£20,000
Centre for Sustainable Energy	Providing direct financial support to help older people stay warm over the winter	£5,000
Chilton Trinity Village Hall	Contribution towards audio visual equipment in a community building	£3,478
Community Council for Somerset (4 grants)	Providing direct financial support to help older people stay warm and supporting diverse communities with language skills	86,635
Community Men in Sheds Taunton	Providing workshop space due to membership and community project growth	£4,950
Contains Art	Subsidising the cost of creative art groups for people with dementia in Watchet	£3,500
Countrymen UK	Development grant for a charity supporting isolated men in Somerset	£5,000
Dance 4 Parkinsons Wells	Therapeutic dance activity for people living with Parkinson's and other neurological conditions	£3,783
Gardening Together (2 grants)	Access to a gardening space to improve wellbeing and reduce isolation in Frome	£5,000
Health Connections Mendip	Providing direct financial support to help older people stay warm over the winter	30,160
Henhayes Centre	Contribution towards increased overheads of day centre for older people in Crewkerne	£4,000
LiveWest Homes	Providing direct financial support to help older people stay warm over the winter	£4,500
MHA Communities South Somerset & Mendip	Providing direct financial support to help older people stay warm over the winter	£16,325
Minehead Dementia Action Alliance	Part-time admin salary to help raise awareness of dementia	£5,000
Museum To You CIC	Taking museum artefacts to care homes and community settings in the Wells area, providing stimulation and reducing isolation	£2,340
Reminiscence Learning (2 grants)	Continuing their multi-generational project in Wellington	£6,605
Shepton Mallet Men's Shed	Core costs for supporting older people's wellbeing	£3,000
SLaMs Somerset Levels and Moors Shed	Storage for recycling bins for residents in local social housing	£4,920
SSAFA Somerset	Providing direct financial support to help older people stay warm over the winter	£8,800
The Be A Good Neighbour Scheme	Contribution towards increased overheads of support groups for older people in Crewkerne	£2,000
The Friendship Circle of Langford Budville and Runnington	Combatting isolation in older people in Wellington area by providing transport for trips and activities	£2,000
The Princess Theatre, Burnham-on-Sea	Combatting isolation and loneliness for older people	£3,000
Wedmore Tuesday Club	Village hall weekly hire costs for over 55s club	£2,000
West Somerset Green Forum (Forum 21)	Providing direct financial support to help older people stay warm over the winter	£11,000

IMPROVING HEALTH & WELLBEING

Grants over £2,000	Project description	Amount
Adventure Therapy (2 grants)	Improving access to sport for young people with disabilities in the Taunton area	£6,000
Albermarle Centre	Continuation funding to support the core costs of working with vulnerable adults in Taunton	£5,000
Arc (3 grants)	Essential services for homeless people in Taunton	£23,800
ARK at Egwood (2 grants)	Care and support for vulnerable adults and young people at an outdoor setting near Merriott	£8,000
Art Experience Days CIC	Stained glass workshops and signposting for people with mental health problems in Wells	£2,500
Blue Flames Amateur Boxing Club	Raising awareness of violence against women and girls and reducing anti-social behaviour and crime in Taunton	£3,000
Bridgwater Foodbank	Contribution towards energy efficiency upgrades for a local foodbank	£10,000
Bridgwater United Community Sports Trust	Continuing sessions to engage the community with sport, fitness and activity, and lead a better, healthier lifestyle	£31,997
Burnham BMX Club	Facility and spotlight upgrade for a local sports facility	£9,552
Burnham-On-Sea Swimming Club	Venue support costs for a swimming club	£2,000
Central Somerset Outdoor Learning Partnership	Developing an outdoor kitchen and an accessible garden at Wild Roots in Catsham	£9,395
Chard WATCH	Contribution towards increased overheads of community-based mental health project	£5,000
CHARIS (2 grants)	Cooking events and transport provision for asylum seekers housed near Bridgwater	£8,200
Citizens Advice Somerset (3 grants)	Providing support for people across Somerset	£108,000
Create & Thrive	New creative groups to improve mental health and reduce isolation in Glastonbury and Somerton	£3,200
Cruse Bereavement Care Somerset	Improving the mental health and emotional resilience of vulnerable bereaved people	£4,926
Equine ReWilding CIC (t/a Paintedhorse)	Providing life skills and coping strategies through horse therapy in the West Pennard area	£2,500
Fair Frome (3 grants)	Contribution towards buying food supplies to meet the growing demand caused by the cost-of-living crisis	£6,350
Family Counselling Trust Somerset	Counselling for children, young people and families on low incomes in Somerset	£3,000
Feed Avalon	Running pop-up cooking schools and gardening workshops in the Glastonbury area	£3,500
Frome Birth Talk	Counselling support for pregnant women and those who have lost a baby	£5,000
Frome Field 2 Fork CIC	Core staffing costs for 2 years to continue outdoor wellbeing sessions and ecological food production	£10,000
Glastonbury Mental Health Network	Community mental health support at The Snug drop-in	£3,950
Growing Space	Social and therapeutic horticulture workshops, community harvesting and cooking afternoons in Wincanton	£4,500
Heads Up	Core costs for a mental health charity in Wells	22,500
Julian House	Supporting vulnerable people into independent living through the purchase of essential items like carpets and white goods	23,000
Love Community CIC	Social inclusion project for adults with a learning disability or neurodiversity	£3,150
Loveable CIC	New social groups in Taunton and Yeovil for adults living with learning disabilities	£10,000
Mendip Community Credit Union	Funding for essential grants for disadvantaged people unable to afford loans	£20,000
Mind in Somerset	Running community growing, cooking and healthy eating activities in Shepton Mallet	£2,000
Move the Mind Foundation CIO (2 grants)	Equine therapy for young people with autism and other neurocognitive conditions	£8,000
Nightingales	Supporting refugees and other diverse communities in the Chard area	£3,840
Nova Sports and Coaching	Pilot project to bring sports to disabled people in 6 day care settings in Somerset	£3,476
Osprey Outdoors CIC	Offering conservation volunteering opportunities on the Mendip Hills for isolated people	£2,000
PACE (Personal Achievements Creative Experiences)	Continuing group activities and day trips for people living with disabilities in Frome	£5,000
Paddington Farm Trust (2 grants)	Food workshops and supported volunteering at a community farm near Glastonbury	£6,871
Parkrun Ltd	Setting up a community park run in Bridgwater	£2,800
Prodigal Bikes	Supplying refurbished bikes to disadvantaged people in Somerset	£4,000
Project Food - Cooking with Confidence	Running cooking confidence groups in Chard for people with physical and/or mental health conditions or those who live alone	£2,496
Rare Species Theatre	Subsidising the cost of weekly exercise classes for adults with long term health conditions	£3,000
Rethink Mental Illness	Gardening activities for supported housing residents in Wells affected by mental health issues	£2,000
Root Connections (2 grants)	Cooking and gardening sessions for hostel residents in the Wells area	£8,000
Rusty Road to Recovery	Setting up arts and crafts therapeutic workshops for people with mental health problems and learning disabilities with lunch club	£4,736
SBA CIC	Contribution to the Gain Advantage Project, supporting people into employment in Bridgwater	£120,000
Second Step (2 grants)	Supporting vulnerable people into independent living through the purchase of essential items like carpets and white goods	£11,300
Seed of Hope	Therapeutic gardening groups for people experiencing mental health problems	£5,000
Shared Earth Learning Co-op (2 grants)	Nature connection and wellbeing group workshops for vulnerable adults in Frome	£6,676
Social Circles (2 grants)	Pilot programme to assess the mental health benefits of helping individuals grow their own food	£4,500
Somerset Activity and Sports Partnership	Supporting adults with learning disabilities to thrive in the workplace	£28,000
Somerset and Avon Rape and Sexual Abuse Support	Reducing the risk of sexual violence for adults with learning disabilities and autism	£19,000
Somerset Community Credit Union	To support members who are applying for help with loans to cover essential utility bills, food, repair bills or referrals from other agencies where an individual needs emergency help.	£30,000
Somerset Counselling Centre	Early intervention with families in Bridgwater, who face complex issues	£7,621
Somerset Sight	Contribution towards salary costs to support visually impaired people in Bridgwater and west Somerset	£85,000
SPTS - Specialist & Personalised Training Services	Developing opportunities for young people with SEND to access permanent employment opportunities across Somerset	£43,564
St George's Church, Wilton	Continuing and expanding a warm and welcoming space for vulnerable adults	£3,250

IMPROVING HEALTH & WELLBEING continued

Grants over £2,000	Project description	Amount
Stogursey Parish Council	Installing a new defibrillator for the community	£2,000
Sweet Track Counselling Agency CIC	Subsidising the cost of community counselling sessions in Glastonbury	£5,000
Taunton & District Mencap Society	Core costs to enable adults with learning disabilities to participate fully in the community	£4,689
The Avenue Tennis Club (Burnham on Sea) Ltd	Improving sports facilities and energy efficiency at a community club	£45,000
The Balsam Centre (3 grants)	Supporting families and adults with mental health problems in Wincanton	£38,721
The Coroners Court Support Service	Supporting bereaved people in Somerset to attend inquests	£2,500
The Equivalent Project (3 grants)	Equine facilitated psychotherapy in the Frome area	£12,500
The Food Forest Project (2 grants)	Developing community green growing spaces in Wedmore and Shepton Mallet	£5,600
The Heard Therapy CIC	Funding to improve shelter and haybarn for continuation of equine therapy for all year weather conditions	£2,984
The Hub Yeovil Community Support Charity	Contribution towards increased overheads of community hub for adults with learning disabilities	£4,000
The Nelson Trust (3 grants)	Supporting vulnerable people into independent living through the purchase of essential items	45,500
The Pod Youth Club	Contribution towards increased overheads of community hub for young adults with learning disabilities in Frome	£5,000
The Rewild Life Project CIC	Improving biodiversity and sustainability through the reinstallation of a pond, swales, tree planting and community education opportunities	£2,000
The Salvation Army Watchet	Increasing the capacity of a community meal service to meet higher demand	£2,500
Therapeutic Art Group	Therapeutic art sessions for adults in south Somerset to increase personal skills and reduce loneliness and isolation	£2,935
Time Banks UK	To support the post of a co-ordinator for this social prescribing team in Crewkerne	£5,000
Towards Tomorrow Together	Memory boxes and establishing a monthly nurture shed for Somerset parents experiencing baby loss	£3,000
Victim Support	Raising awareness across Somerset of fraud and supporting victims of fraud being re-victimised	£10,000
Victoria Park Community Centre (2 grants)	Running a food pantry and community café in Bridgwater	14,736
We Hear You	Core cost of delivering cancer counselling across Somerset	£5,000
Wells Boxing Club	Updating and improving equipment to help engage young people in a positive activity and away from anti-social behaviour and crime	£5,000
Wells Vineyard	Contribution towards buying food supplies to meet the growing demand caused by the cost-of-living crisis	£5,000
Wessex Counselling and Psychotherapy (2 grants)	Counselling for young care leavers currently living in YMCAs	£6,000
Wessex MS Therapy Centre	Improving the physical and mental wellbeing of people in Somerset living with debilitating long term health conditions	£5,000
Westfield United Reformed Church, Bridgwater (2 grants)	Contribution towards increased overheads of street cafe for homeless people in Bridgwater	£10,000
Windsor Hill Wood (3 grants)	Therapeutic intervention for vulnerable people in the Shepton Mallet area with a history of addiction issues	£11,500
Wiveliscombe Welcomes Refugees	Continuation funding for supporting Ukrainians with employment and housing issues	£5,000
Wivey Grows (party of Wivey Cares)	Core costs towards salary for volunteer coordinator in Wiveliscombe	£2,458
Wivey Kitchen CIO	Securing a new permanent home in Wiveliscombe to cook community meals and run cooking sessions	£10,000
Yeovil Art Space	Supporting mental well-being for adults	£4,500
Yeovil Rivers Community Trust (2 grants)	Expanding support for adults with learning difficulties in south Somerset	£12,500

IN ADDITION

144 grants under £2,000 were awarded to groups, totalling £127,1903

391 grants were awarded to individuals, totalling £221,494

SUPPORTING SOMERSET'S SOCIAL ENTERPRISES*

Organisation	Project description	Loan	Grant	Total
Interim Spaces	Purchasing a Grade II listed building in the centre of Shepton Mallet to transform it into a retail incubator and affordable hire space for the community	£40,000	£80,000	£120,000

* This funding was made possible thanks to The Growth Fund, which is a partnership between The National Lottery Community Fund and Big Society Capital, delivered by Access through a range of social investors including Somerset Community Foundation. It makes up to £50m available to support charities and social enterprises to grow and create social impact in their communities. The Growth Fund uses a combination of grant funding, made possible thanks to National Lottery players, and loan finance from Big Society Capital and other co-investors to address specific gaps in the social investment market

A HUGE THANK YOU TO EVERY SINGLE ONE OF OUR SUPPORTERS

We can only give vital funding to hundreds of life-changing small charities across Somerset thanks to your generosity. And a very big thank you to our volunteer Trustees and panel members who generously lend their time and expertise to support our work.

OUR CHARITABLE FUNDS

A & H Fund	John Nowes Exhibition Foundation	The Burford Fund
Access Foundation Growth Fund	King James Exhibition Fund	The Charlie Bigham's Fund
Angela Yeoman Fund	Lucy Nelson Fund	The Chris & Heather Virgin Fund
Anne Dodgson Memorial Fund	Mary's Beat	The Clarke Willmott Community Fund
Beacon Fund	McGreevy Charitable Trust	The Corton Hill Trust
Bernie's Vision	Medlock Fund	The Courage Family Fund
Bishop Fox's Educational Foundation	Mendip Hills Fund	The David Quinton Trust
Burnham and Weston Energy Fund	Michael Samuel Charitable Trust	The Early Help Fund
C & JP Fund	Millennium Fund	The Fairview Fund
Care Focus Fund	Norah Cooke-Hurle Fund	The Gamble Fund
Cheeke and Stodgell Foundation	Oake Sunshine Fund	The Glemsford Fund
Christopher Tanner Memorial Fund	Perry's Recycling Fund	The Good Stuff Fund
Churchstanton Community Fund	Peter Wyman Fund	The Hamstones Fund
Commissioner's Crime Prevention Fund	Philip and Melanie Gibbs Fund	The Hector Tanner Memorial Fund
Community Building Energy Efficiency Fund	Rebecca's Hope	The John and Dorothy Ball Fund
Crowcombe Chest Grants Fund	Re-imagining the Levels	The Mulberry Somerset Community Fund
Discovery Community Fund	Ringham Fund	The Old Mill Fund
Donald Lake Memorial Fund	Silent Echoes Fund	The Pinniger Fund
Dyke Exhibition Fund	Sir John Wills Memorial Trust	The Preventing Victims Fund
Eagle House Grants Fund	Somerset Social Enterprise Fund	The Richard Huish Foundation Fund
Elliot's Touch	Somerset Community Partnership Fund	The Shoon Fund
Exmoor Community Trust Fund	Somerset Fund for the Deaf and Hard of Hearing	The Somerset Fund
Field House Trust	Somerset Giving Fund	The Somerset Wellbeing Fund (formerly The David Price Fund)
Get Set Go! Fund	Somerset Lord-Lieutenants Fund for Youth	The Somerset Youth Fund
Graham Burrough Charitable Trust	Somerset Masonic Fund	The Summerfield Force for Good Fund
Grave Family Fund	Somerset Restorative Justice	The Waste Not Somerset Fund
Growing and Cooking Grants	Somerset Welcome Fund	The Welkin Fund
High Sheriff of Somerset Charitable Trust	Surviving Winter Appeal	The Wessex Water Fund
Hinton St George Charitable Trust	SWEF	The Wilton Trust
Hobhouse Memorial Fund	T & PJ (Milborne Port) Fund	WCS Pickford Trust
Horseshoes and Handprints Trust	Team Somerset 500 Club	West Somerset Relief Fund
Hunt's Food Group Community Fund	The Aequitas Fund	Yeovil Town Football Club Fund
ICB Community Resilience Fund		Young Carers Fund



@FarmerTouque



THE SOMERSET FUND

Thanks to Somerset Council for partnering to provide 50% matched funding for every donation, which means our supporters make an even bigger impact in our communities.

- Benefact Group
- Curry Rivel Tennis Tournament
- David Salisbury Joinery
- Finger on the Pulse Research
- Host Somerset
- James and Jackie Lambert
- Linmardon Trust
- Mr and Mrs Virgin
- North Curry Community Coffee Shop
- Pioneer Law
- RK Bell
- Roberts Group
- Somerset Council
- The Bristol & West Endowment Fund
- Wells Cathedral – with proceeds from services including The Readers’ Service
- Wessex Water – with proceeds from their GetWaterFit Campaign
- Willie Gething

Plus all of our donors who wish to remain anonymous.

PHILANTHROPY NETWORK

We’re very thankful to each and every member of Somerset Philanthropy Network, a community of passionate people who want to change the world on their doorstep and who provide vital support for our work.

- Amanda Ellingworth
- Bruce McIntosh
- Chris Bishop
- Edward Bayntun-Coward
- Kate Turner
- Kevin Whitmarsh
- Lady Louise Patten
- Lucy and James Nelson
- Martin Stanley
- Maureen Whitmore
- Nicholas and Diana Barber
- Nigel Clark
- Peter Wyman
- Philip Gibbs
- Richard Lloyd
- Stephen Dawson
- Tim Walker
- Venetia Hoare & Hamish Leng

CORE FUNDERS

We’re particularly grateful to the following organisations, who provide vital funding to support our core work alongside many other wonderful Friends of the Foundation.

- Cornwall Glass
- Deepest Books
- Ewen Cameron Charitable Trust
- Nani Huyu Charitable Trust
- The Dickinson Family Charitable Trust
- Somerset Council



OUR VISION, MISSION AND VALUES

OUR MISSION

Our mission is to help passionate people in Somerset change the world on their doorstep by funding local causes and inspiring local giving and philanthropy.

OUR VISION

Our vision for Somerset is a place with strong communities where everyone has the opportunity to thrive.

OUR VALUES

We're here for everyone: We embed diverse perspectives throughout everything we do and welcome and value the uniqueness in everyone

We drive equity: We work to better understand the needs, challenges, dreams and aspirations of historically underfunded communities and take positive action to redress the balance

We act with integrity: We're transparent about how and why we do things and always do the best we can

We lead with kindness: We're supportive, compassionate and respectful to each other and everyone we serve

We strive to be better: We seek and reflect on feedback and insight, foster collaboration, and share our learnings to get better results.





DIRECTING FUNDS DRIVING CHANGE.

Our purpose is to inspire local giving and fund social action, so that our communities can drive change and realise their dreams.



Patron

Lady Gass DCVO JP

President

Mohammed Saddiq,
HM Lord-Lieutenant of Somerset

Vice-Presidents

Jane Barrie OBE
Lord Cameron of Dillington
John Cullum
Rob Beckley QPM
(The High Sheriff of Somerset 2024/25)
Michael Fiennes
Annie Maw CVO
Maureen Whitmore
Peter Wyman CBE
Angela Yeoman OBE

Chair

Michael Samuel MBE

Trustees

Chris Bishop
Amanda Ellingworth
Michelle Ferris
Helen Gulvin
Kokila Lane
Angela Kerr
John Lyon CB
Bruce McIntosh
Lucy Nelson DL
Louisa Raybould
David Taylor
Tim Walker (retired 11/10/24)
Giles Wood

Staff

Chief Executive Justin Sargent OBE DL
Philanthropy Director Laura Blake
Philanthropy Director Kelly Hall (maternity cover)
Operations Director Mary Hancock
Programmes Director Andy Ridgewell

Senior Programmes Manager Kirsty Campbell
Senior Finance Manager
Danni Cockerill (from September 2024)
Praseeda Pramodh (up to November 2024)
Senior Philanthropy Manager Fiona Foster
Senior Programmes Manager Amelia Thompson
Senior Marketing Manager Sue Wheeler

Research and Insights Manager Emily Berridge
Programmes Manager Sean Boland
Marketing Manager Ross Collins
Finance Manager Carolyn Phimister
Programmes Manager Clare Stephen
Programmes Manager Peter Stolze

Office and Marketing Administrator Nina Pearson
Programmes Administrator Sara Powell

Get in touch:

Somerset Community Foundation
Yeoman House, The Bath and West Showground,
Shepton Mallet, Somerset BA4 6QN

Give us a call 01749 344949

Send us an email info@somersetcf.org.uk

Connect www.somersetcf.org.uk

